


KENAN METAL


ARTMINYUM



KIŞ BAHÇESİ SİSTEMLERİ

WINTER GARDEN SYSTEMS

KIŞ BAHÇESİ SİSTEMLERİ

WINTER GARDEN SYSTEMS

ARTMİNYUM®
Aluminum Profile Systems

KENAN METAL
Alüminyum'un Sanata Dönüşümü

KIŞ BAHÇELERİ İÇ MEKANI DIŞ HAVA KOŞULLARINDAN KORUYARAK KULLANICILARA DAHA UZUN SÜRE DIŞ MEKAN KEYFİ YAŞAMA İMKANI TANIR.

KIŞ BAHÇELERİ, KULLANICILARA DOĞAL IŞIK VE DIŞ MEKANIN GÜZELLİKLERİNİ YIL BOYUNCA YAŞAMA İMKANI TANIYAN ESTETİK VE İŞLEVSEL YAPILAR OLARAK POPÜLERDİR.

KIŞ BAHÇELERİ MİMARİ TASARIMLARA EK OLARAK MONTE EDİLİR VE MİMARİ AÇIDAN ESTETİK SAĞLAR.

WINTER GARDENS PROVIDE USERS WITH THE OPPORTUNITY TO ENJOY OUTDOOR SPACES FOR A LONGER PERIOD BY SHELTERING THE INDOOR ENVIRONMENT FROM EXTERNAL WEATHER CONDITIONS.

WINTER GARDENS ARE POPULAR AS AESTHETIC AND FUNCTIONAL STRUCTURES THAT ALLOW USERS TO EXPERIENCE THE BEAUTY OF NATURAL LIGHT AND OUTDOOR SURROUNDINGS THROUGHOUT THE YEAR.

IN ADDITION TO ARCHITECTURAL DESIGNS, WINTER GARDENS ARE ASSEMBLED AND CONTRIBUTE AESTHETICALLY FROM AN ARCHITECTURAL PERSPECTIVE.



RAL RENK STANDARDINA GÖRE SEÇTİĞİNİZ TÜM RENKLER UYGULANABİLİR.

COLOURING OF YOUR CHOICE, ACCORDING TO THE RAL COLOUR STANDARD.



YAĞMUR VE RÜZGAR GİBİ HAVA ŞARTLARINA SON DERECE DAYANIKLIDIR.

IT IS EXTREMELY RESISTANT TO WEATHER CONDITIONS SUCH AS RAIN AND WIND.



MATERYAL // 6063 T5 ALÜMİNYUM, PASLANMAZ ÇELİK VE DERLİN.

MATERIALS // 6063 T5 ALUMINUM, STAINLESS STEEL AND DERLİN.

- ALÜMİNYUM KIŞ BAHÇELERİ GENELLİKLE CAM DUVARLAR VE ÇATILARLA KAPLIDIR. BU, İÇ MEKANIN DOĞAL IŞIK ALMASINA VE AÇIK BİR ATMOSFER OLUŞTURMASINA YARDIMCI OLUR.

- ALÜMİNYUM KIŞ BAHÇELERİ GENELLİKLE ISITMA SİSTEMİNE SAHİPTİR, BU DA SOĞUK HAVA KOŞULLARINDA İÇ MEKANIN SICAK TUTULMASINI SAĞLAR.

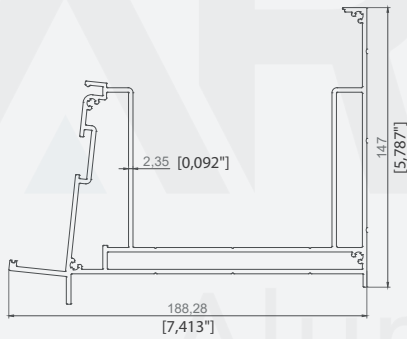
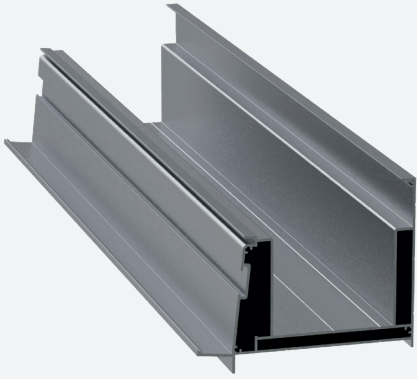
- AYNI ZAMANDA, YAZ AYLARINDA AŞIRI SICAKLIKLARI KONTROL ETMEK İÇİN SOĞUTMA SİSTEMLERİ DE ENTEGRE EDİLEBİLİR.

- ALUMINUM WINTER GARDENS ARE OFTEN COVERED WITH GLASS WALLS AND ROOFS. THIS HELPS THE INTERIOR TO RECEIVE NATURAL LIGHT AND CREATE AN OPEN ATMOSPHERE.

- ALUMINUM WINTER GARDENS TYPICALLY HAVE A HEATING SYSTEM, ENSURING THAT THE INTERIOR STAYS WARM DURING COLD WEATHER.

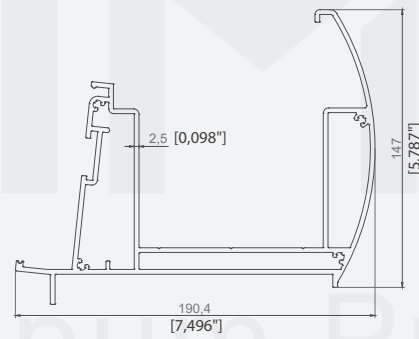
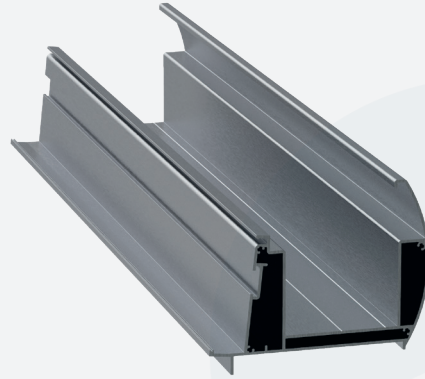
- SIMULTANEOUSLY, COOLING SYSTEMS CAN ALSO BE INTEGRATED TO CONTROL EXCESSIVE HEAT DURING THE SUMMER MONTHS.





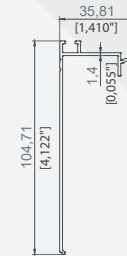
188,28X147 DÜZ OLUK PROFİLİ
188,28X147 STRAIGHT GUTTER PROFILE

| | |
|--------------------------|---------------------------|
| ÜRÜN KODU / PRODUCT CODE | 2530 |
| AĞIRLIK / WEIGHT | 5,399 KG/M 11,903 LB/M |



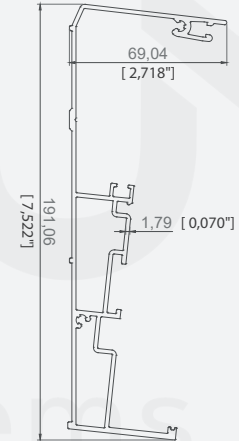
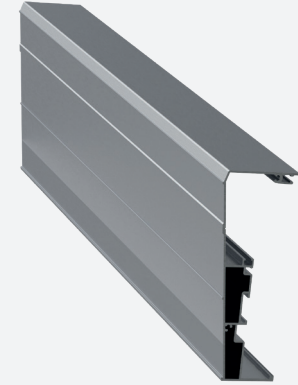
190,4X147 OVAL OLUK PROFİLİ
190,4X147 OVAL GUTTER PROFILE

| | |
|--------------------------|---------------------------|
| ÜRÜN KODU / PRODUCT CODE | 2594 |
| AĞIRLIK / WEIGHT | 5,619 KG/M 12,388 LB/M |



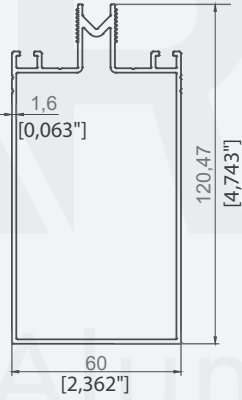
35,81X104,71 OLUK VE ARKA KAYIT KAPAĞI
35,81X104,71 GUTTER AND BACK BEAM COVER

| | |
|--------------------------|--------------------------|
| ÜRÜN KODU / PRODUCT CODE | 2533 |
| AĞIRLIK / WEIGHT | 0,600 KG/M 1,322 LB/M |



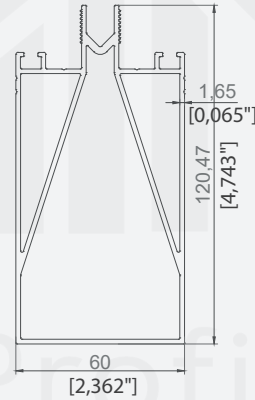
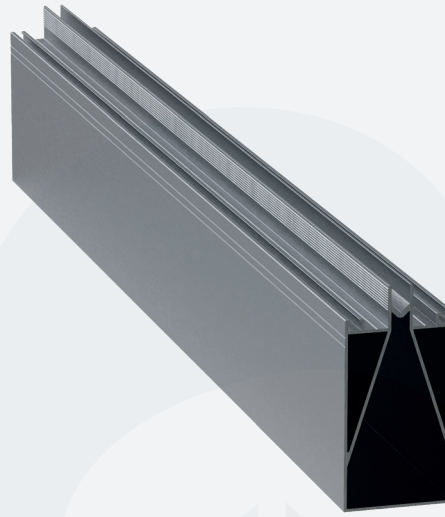
69X191 ARKA KAYIT PROFİLİ
69X191 BACK BEAM PROFILE

| | |
|--------------------------|--------------------------|
| ÜRÜN KODU / PRODUCT CODE | 2532 |
| AĞIRLIK / WEIGHT | 2,651 KG/M 5,844 LB/M |



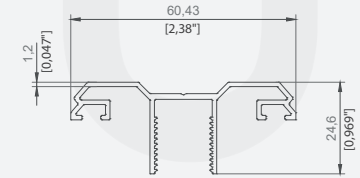
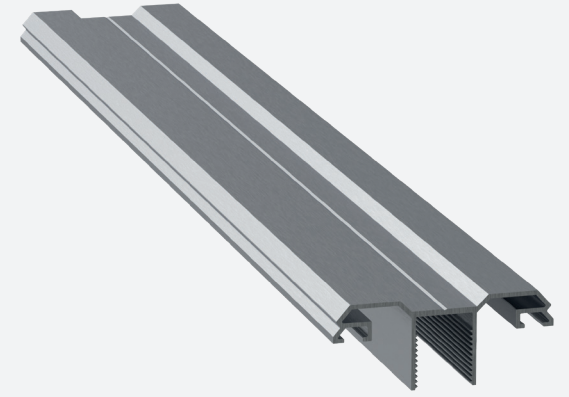
STANDART CAM TAŞIYICI PROFİLİ
STANDART GLASS CARRIER PROFILE

| | |
|--------------------------|--------------------------|
| ÜRÜN KODU / PRODUCT CODE | 2490 |
| AĞIRLIK / WEIGHT | 1,721 KG/M 3,794 LB/M |



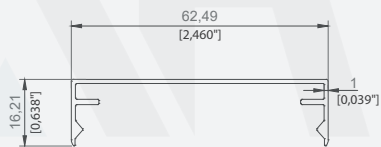
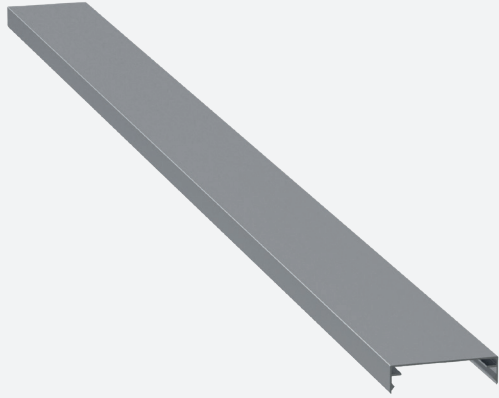
DESTEKLİ CAM TAŞIYICI 1
SUPPORTED GLASS CARRIER PROFILE 1

| | |
|--------------------------|--------------------------|
| ÜRÜN KODU / PRODUCT CODE | 2935 |
| AĞIRLIK / WEIGHT | 2,440 KG/M 5,379 LB/M |



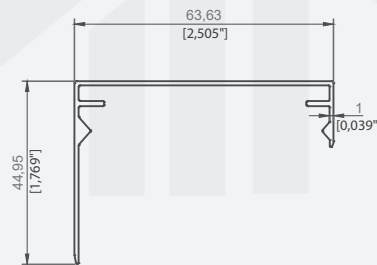
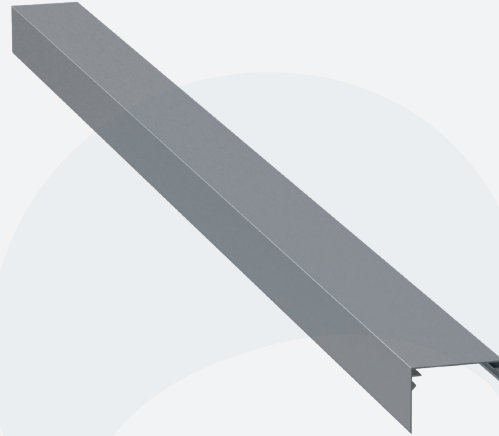
60,4X24,6 CAM KAPAK PROFİLİ
60,4X24,6 GLASS COVER PROFILE

| | |
|--------------------------|--------------------------|
| ÜRÜN KODU / PRODUCT CODE | 2534 |
| AĞIRLIK / WEIGHT | 0,515 KG/M 1,135 LB/M |



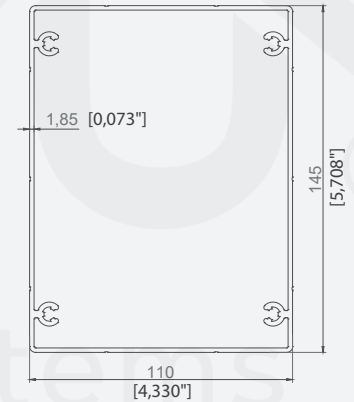
62,5X16,21 ORTA KAPAK PROFİLİ
62,5X16,21 MIDDLE COVER PROFILE

| | |
|--------------------------|--------------------------|
| ÜRÜN KODU / PRODUCT CODE | 2535 |
| AĞIRLIK / WEIGHT | 0,312 KG/M 0,687 LB/M |



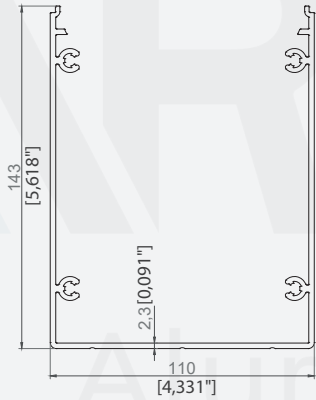
63,63X44,95 KENAR KAPAK PROFİLİ
63,63X44,95 SIDE COVER PROFILE

| | |
|--------------------------|--------------------------|
| ÜRÜN KODU / PRODUCT CODE | 2536 |
| AĞIRLIK / WEIGHT | 0,415 KG/M 0,915 LB/M |



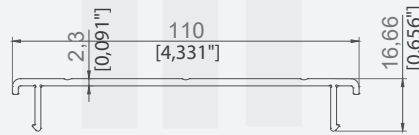
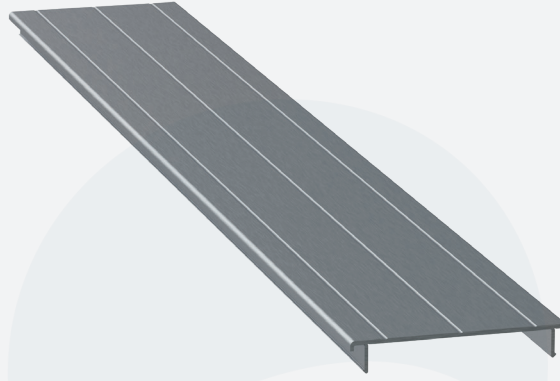
110X145 DİKME PROFİLİ
110X145 PILLAR PROFILE

| | |
|--------------------------|--------------------------|
| ÜRÜN KODU / PRODUCT CODE | 2111 |
| AĞIRLIK / WEIGHT | 3,035 KG/M 6,691 LB/M |



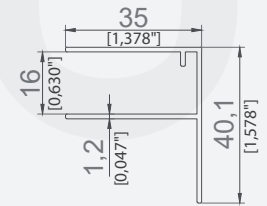
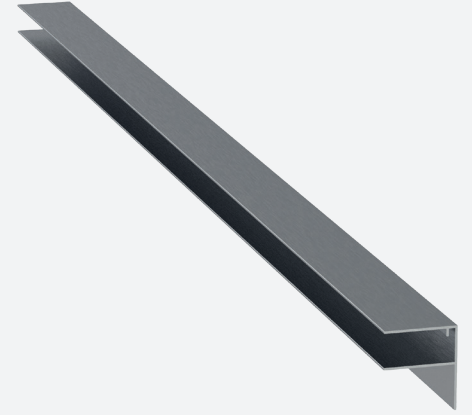
110x142,7 DİKME GÖVDE PROFİLİ
110X142,7 PILLAR MAIN PROFILE

| | |
|--------------------------|--------------------------|
| ÜRÜN KODU / PRODUCT CODE | 2301 |
| AĞIRLIK / WEIGHT | 3,003 KG/M 6,620 LB/M |



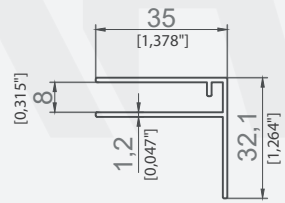
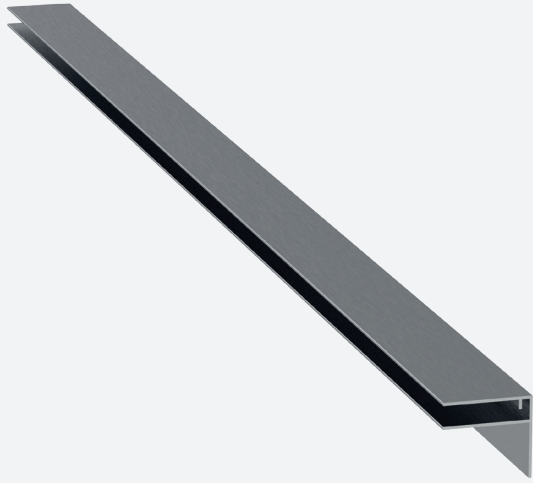
110x16,66 DİKME KAPAK PROFİLİ
110X16,66 PILLAR COVER PROFILE

| | |
|--------------------------|--------------------------|
| ÜRÜN KODU / PRODUCT CODE | 2302 |
| AĞIRLIK / WEIGHT | 0,846 KG/M 1,865 LB/M |



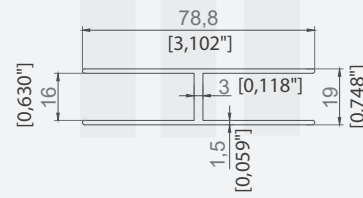
35X40,1 F PROFİLİ
35X40,1 F PROFILE

| | |
|--------------------------|---------------------------|
| ÜRÜN KODU / PRODUCT CODE | 2643 |
| AĞIRLIK / WEIGHT | 0,365 KG/M 0,8047 LB/M |



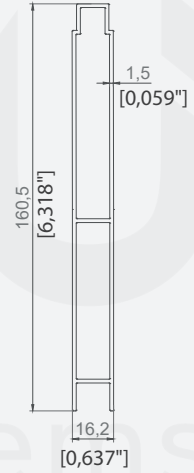
35X32,1 F PROFİLİ
35X32,1 F PROFILE

| | |
|--------------------------|--------------------------|
| ÜRÜN KODU / PRODUCT CODE | 2542 |
| AĞIRLIK / WEIGHT | 0,190 KG/M 0,419 LB/M |



78,8X 19 H PROFİLİ
78,8X 19 H PROFILE

| | |
|--------------------------|--------------------------|
| ÜRÜN KODU / PRODUCT CODE | 2642 |
| AĞIRLIK / WEIGHT | 0,770 KG/M 1,697 LB/M |



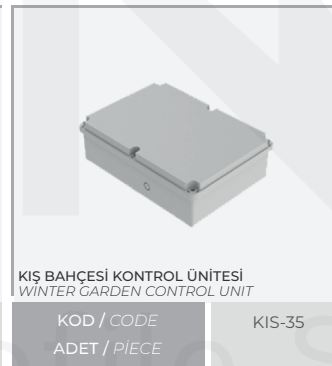
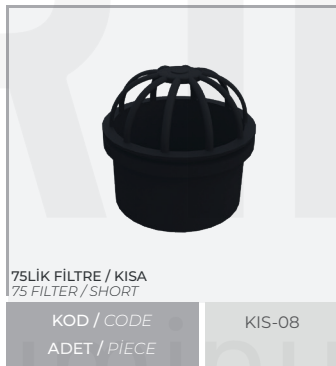
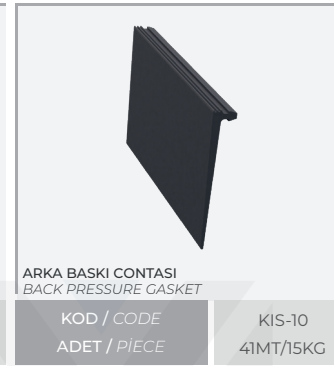
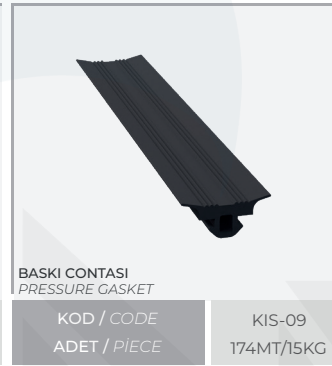
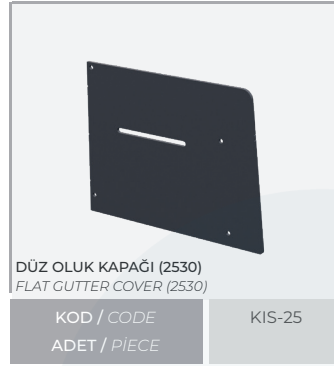
16,2X160 PANEL PROFİLİ
16,2X160 PANEL PROFILE

| | |
|--------------------------|--------------------------|
| ÜRÜN KODU / PRODUCT CODE | 2546 |
| AĞIRLIK / WEIGHT | 1,465 KG/M 3,230 LB/M |



KIŞ BAHÇESİ
AKSESUARLARI
1.SERİ

WINTER GARDEN
ACCESSORIES
1.SERIES



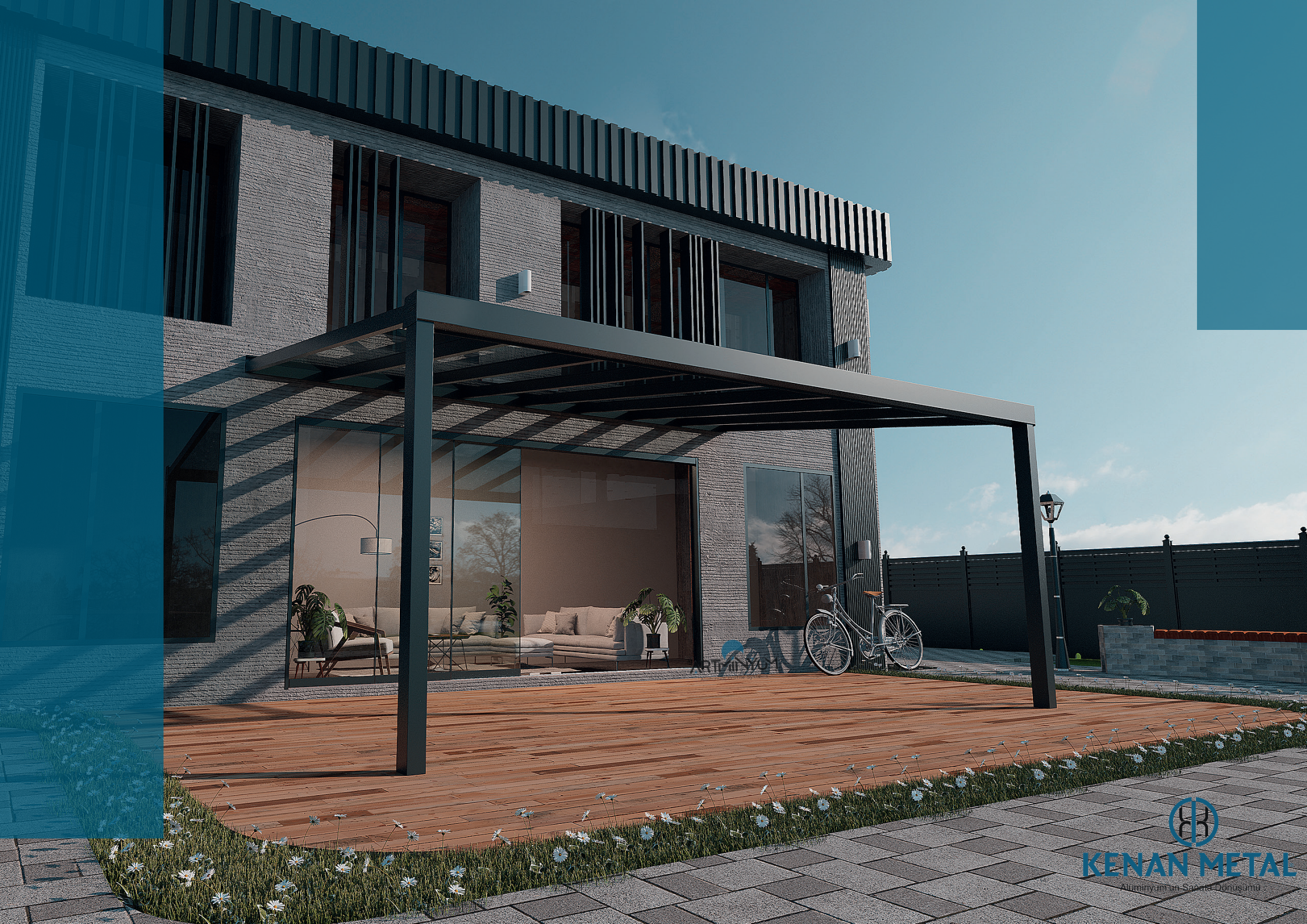
ARTMINYUM
Aluminum Profile Systems

ARTMINYUM
Aluminum Profile Systems



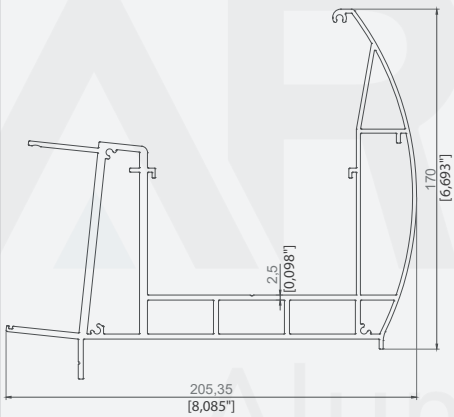
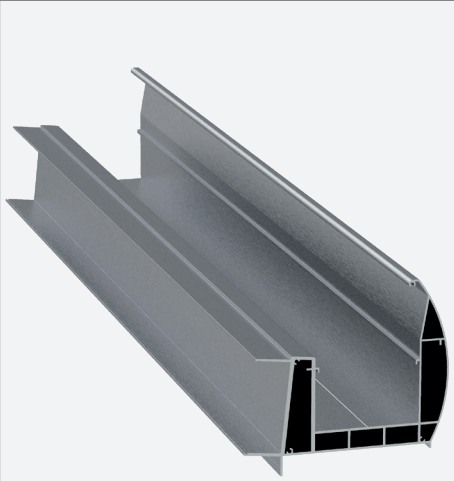
KENAN METAL

Alüminyum'un Sanata Dönüşümü



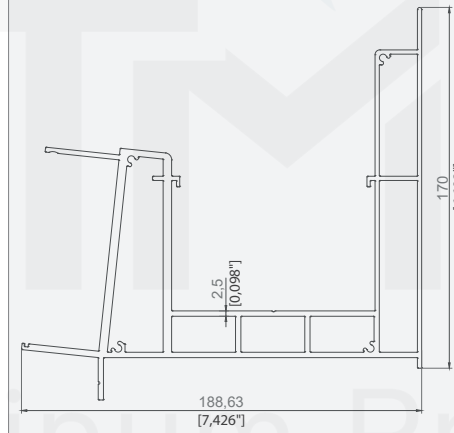
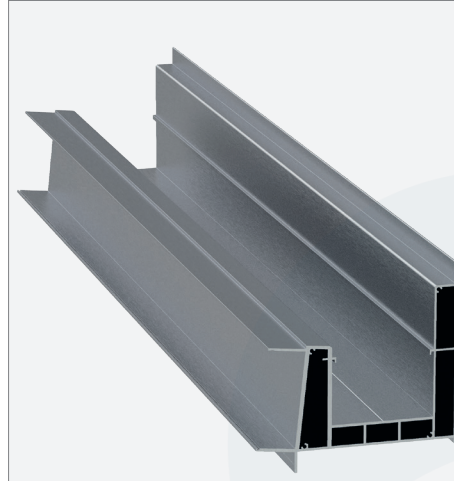
KENAN METAL

Alüminyum'un Sağana Dönüşümü



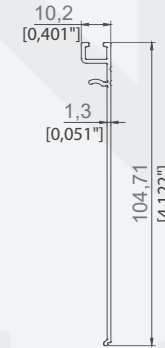
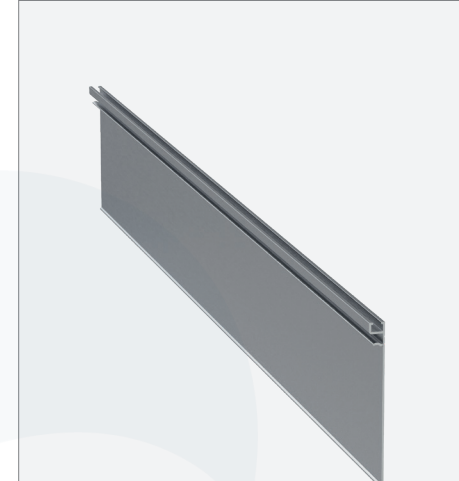
205X170 OVAL OLUK PROFİLİ
205X170 OVAL GUTTER PROFILE

| | |
|--------------------------|---------------------------|
| ÜRÜN KODU / PRODUCT CODE | 3536 |
| AĞIRLIK / WEIGHT | 7,095 KG/M 15,642 LB/M |



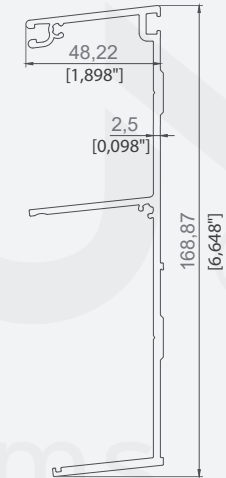
188X170 DÜZ OLUK PROFİLİ
205X170 FLAT GUTTER PROFILE

| | |
|--------------------------|--------------------------|
| ÜRÜN KODU / PRODUCT CODE | 3535 |
| AĞIRLIK / WEIGHT | 6,827 KG/M 15,05 LB/M |



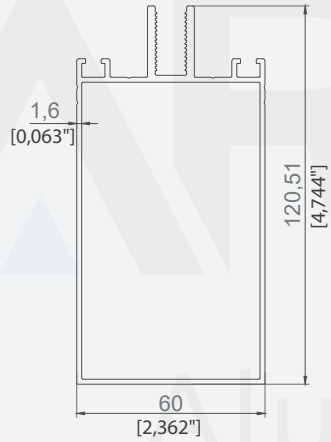
10,2X104,71 OLUK VE ARKA KAYIT KAPAĞI
10,2X104,71 GUTTER AND BACK BEAM COVER

| | |
|--------------------------|--------------------------|
| ÜRÜN KODU / PRODUCT CODE | 2489 |
| AĞIRLIK / WEIGHT | 0,458 KG/M 1,009 LB/M |



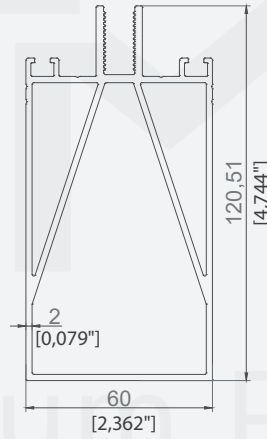
ARKA KAYIT PROFİLİ
BACK BEAM PROFILE

| | |
|--------------------------|--------------------------|
| ÜRÜN KODU / PRODUCT CODE | 3053 |
| AĞIRLIK / WEIGHT | 2,250 KG/M 4,960 LB/M |



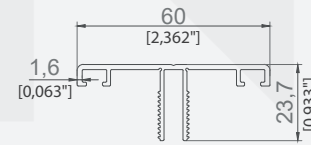
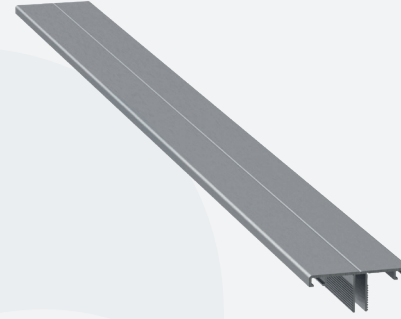
STANDART CAM TAŞIYICI PROFİLİ
STANDART GLASS CARRIER PROFILE

| | |
|--------------------------|--------------------------|
| ÜRÜN KODU / PRODUCT CODE | 3047 |
| AĞIRLIK / WEIGHT | 1,799 KG/M 3,966 LB/M |



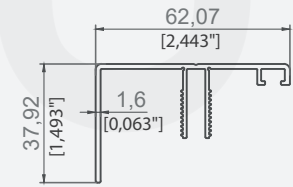
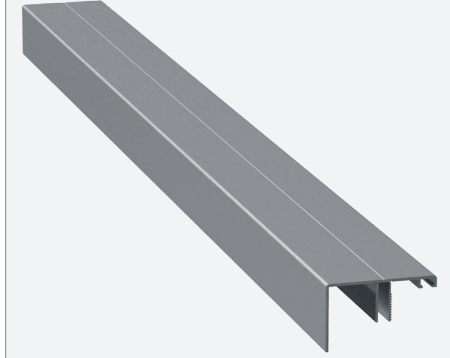
DESTEKLİ CAM TAŞIYICI PROFİLİ
SUPPORTED GLASS CARRIER PROFILE

| | |
|--------------------------|--------------------------|
| ÜRÜN KODU / PRODUCT CODE | 3046 |
| AĞIRLIK / WEIGHT | 2,920 KG/M 6,437 LB/M |



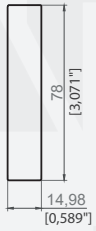
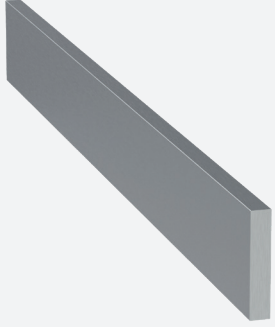
60X23,7 CAM KAPAK PROFİLİ
60X23,7 GLASS COVER PROFILE

| | |
|--------------------------|--------------------------|
| ÜRÜN KODU / PRODUCT CODE | 3045 |
| AĞIRLIK / WEIGHT | 0,520 KG/M 1,146 LB/M |



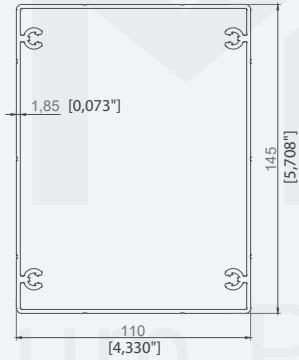
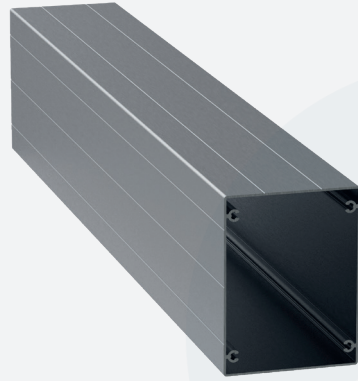
62,07X37,92 KENAR CAM KAPAK PROFİLİ
62,07X37,92 SIDE GLASS COVER PROFILE

| | |
|--------------------------|--------------------------|
| ÜRÜN KODU / PRODUCT CODE | 3044 |
| AĞIRLIK / WEIGHT | 0,640 KG/M 1,411 LB/M |



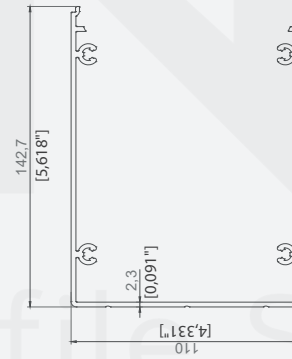
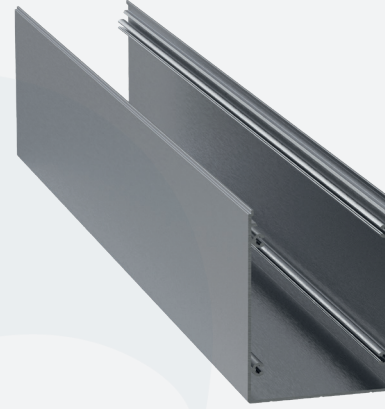
14,68X78 LAMA
14,68X78 STRENGTHENING PROFILE

| | |
|--------------------------|--------------------------|
| ÜRÜN KODU / PRODUCT CODE | 2945 |
| AĞIRLIK / WEIGHT | 3,155 KG/M 6,955 LB/M |



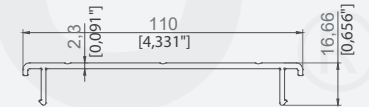
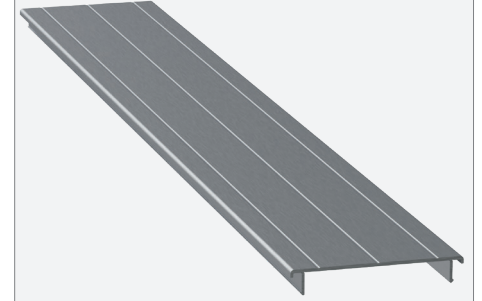
110X145 DİKME PROFİLİ
110X145 PILLAR PROFILE

| | |
|--------------------------|--------------------------|
| ÜRÜN KODU / PRODUCT CODE | 2111 |
| AĞIRLIK / WEIGHT | 3,035 KG/M 6,691 LB/M |



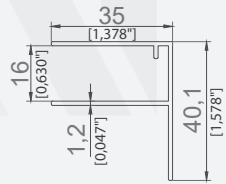
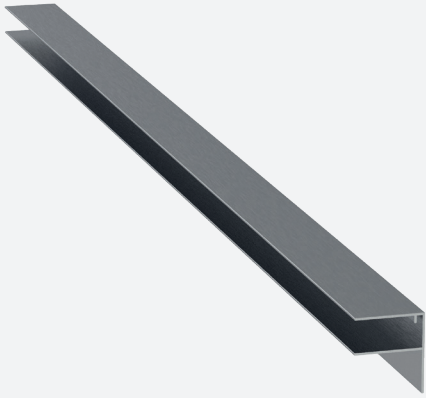
110x142,7 DİKME GÖVDE
110X142,7 PILLAR MAIN

| | |
|--------------------------|--------------------------|
| ÜRÜN KODU / PRODUCT CODE | 2301 |
| AĞIRLIK / WEIGHT | 3,003 KG/M 6,620 LB/M |



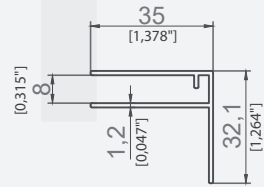
110x16,66 DİKME KAPAK PROFİLİ
110X16,66 PILLAR COVER PROFILE

| | |
|--------------------------|--------------------------|
| ÜRÜN KODU / PRODUCT CODE | 2302 |
| AĞIRLIK / WEIGHT | 0,846 KG/M 1,865 LB/M |



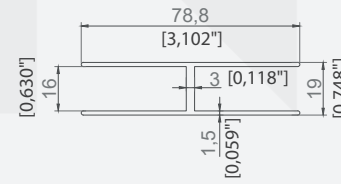
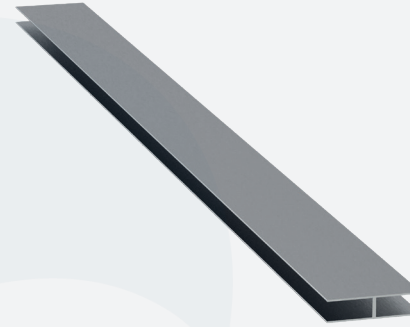
35X40,1 F PROFİLİ
35X40,1 F PROFILE

| | |
|--------------------------|---------------------------|
| ÜRÜN KODU / PRODUCT CODE | 2643 |
| AĞIRLIK / WEIGHT | 0,365 KG/M 0,8047 LB/M |



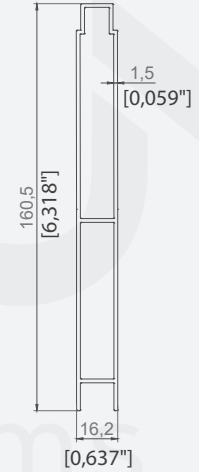
35X32,1 F PROFİLİ
35X32,1 F PROFILE

| | |
|--------------------------|--------------------------|
| ÜRÜN KODU / PRODUCT CODE | 2542 |
| AĞIRLIK / WEIGHT | 0,190 KG/M 0,419 LB/M |



78,8X19 H PROFİLİ
78,8X19 H PROFILE

| | |
|--------------------------|--------------------------|
| ÜRÜN KODU / PRODUCT CODE | 2642 |
| AĞIRLIK / WEIGHT | 0,770 KG/M 1,697 LB/M |



16,2X160 PANEL PROFİLİ
16,2X160 PANEL PROFILE

| | |
|--------------------------|--------------------------|
| ÜRÜN KODU / PRODUCT CODE | 2546 |
| AĞIRLIK / WEIGHT | 1,465 KG/M 3,230 LB/M |



KIŞ BAĞÇESİ
AKSESUARLARI
2.SERİ

WINTER GARDEN
ACCESSORIES
2.SERIES



DÜZ OLUK KAPAÇI(3535)
FLAT GUTTER COVER(3535)

KOD / CODE
ADET / PIECE

KIS-54



OVAL OLUK KAPAÇI(3536)
OVAL GUTTER COVER(3536)

KOD / CODE
ADET / PIECE

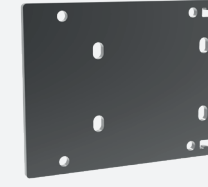
KIS-55



ARKA ASKI KAPAÇI(3053)
REAR HANGER COVER(3053)

KOD / CODE
ADET / PIECE

KIS-56



KAPAKLI AYAK ALT BAĞLANTI APARATI(2301,2302)
COVERED FOOT BOTTOM CONNECTION APPARATUS(2301,2302)

KOD / CODE
ADET / PIECE

KIS-28



BASKI CONTASI
PRESSURE GASKET

KOD / CODE
ADET / PIECE

KIS-09
174MT/15KG



ARKA BASKI CONTASI
BACK PRESSURE GASKET

KOD / CODE
ADET / PIECE

KIS-10
41MT/15KG



75LİK FİLTRE / UZUN
75 FILTER / TALL

KOD / CODE
ADET / PIECE

KIS-08Y



75LİK FİLTRE / KISA
75 FILTER / SHORT

KOD / CODE
ADET / PIECE

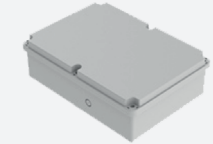
KIS-08



24V LED
24V LED

KOD / CODE
ADET / PIECE

KIS-22
100



KIŞ BAĞÇESİ KONTROL ÜNİTESİ
WINTER GARDEN CONTROL UNIT

KOD / CODE
ADET / PIECE

KIS-35



2X0.75 NYAF KABLO
2X0.75 NYAF CABLE

KOD / CODE
ADET / PIECE

PRG-116
100 MT

Aluminum Profile Systems



ARTMINYUM[®]
Aluminum Profile Systems



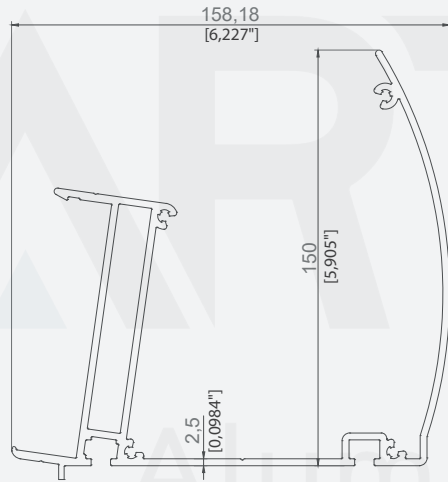

KENAN METAL
Alüminyum'un Sanata Dönüşümü

ARTMİNYUM®
Aluminum Profile Systems



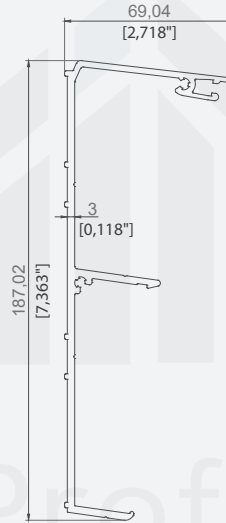
KENAN METAL

Alüminyum'un Sanata Dönüşümü



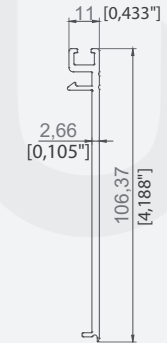
158X150 OVAL OLUK PROFİLİ
158X150 OVAL GUTTER PROFILE

| | |
|--------------------------|--------------------------|
| ÜRÜN KODU / PRODUCT CODE | 2012 |
| AĞIRLIK / WEIGHT | 4,115 KG/M 9,072 LB/M |



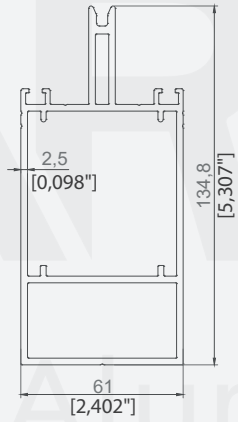
69X187 ARKA KAYIT PROFİLİ
69X187 BACK BEAM PROFILE

| | |
|--------------------------|--------------------------|
| ÜRÜN KODU / PRODUCT CODE | 2004 |
| AĞIRLIK / WEIGHT | 2,602 KG/M 5,736 LB/M |



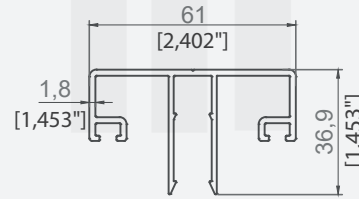
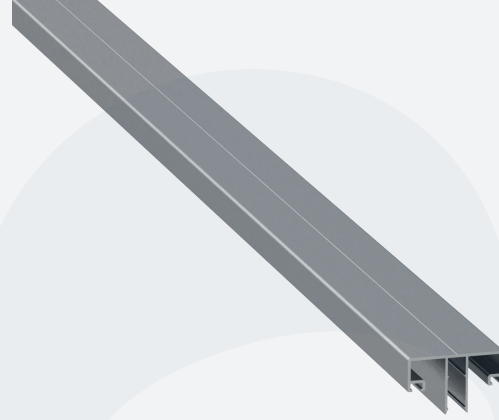
11X106,37 OLUK VE ARKA KAYIT KAPAÇI
11X106,37 GUTTER AND BACK BEAM COVER

| | |
|--------------------------|--------------------------|
| ÜRÜN KODU / PRODUCT CODE | 2011 |
| AĞIRLIK / WEIGHT | 0,890 KG/M 1,962 LB/M |



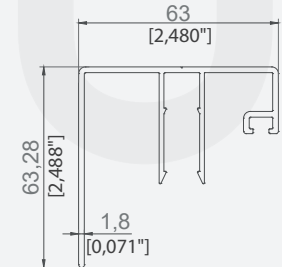
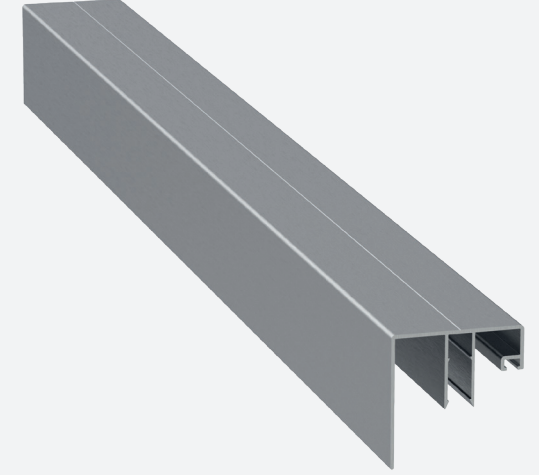
61X134,8 CAM TAŞIYICI PROFİLİ
61X134,8 GLASS CARRIER PROFILE

| | |
|--------------------------|--------------------------|
| ÜRÜN KODU / PRODUCT CODE | 2005 |
| AĞIRLIK / WEIGHT | 3,230 KG/M 7,121 LB/M |



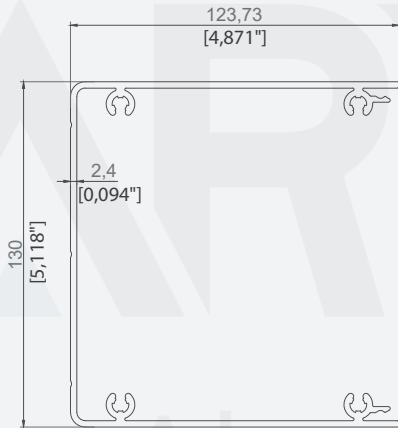
61X36,9 ORTA CAM KAPAK PROFİLİ
61X36,9 MIDDLE GLASS COVER PROFILE

| | |
|--------------------------|--------------------------|
| ÜRÜN KODU / PRODUCT CODE | 2007 |
| AĞIRLIK / WEIGHT | 0,925 KG/M 2,039 LB/M |



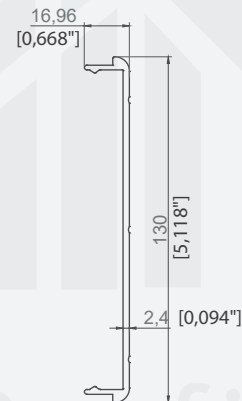
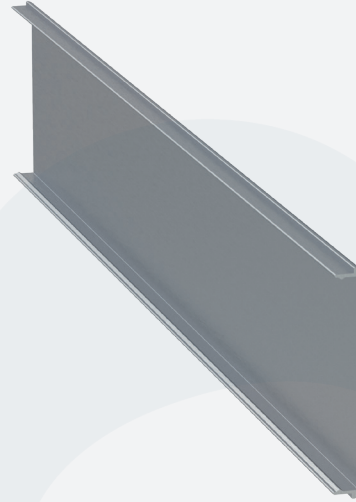
63X63,2 KENAR CAM KAPAK PROFİLİ
63X63,2 SIDE GLASS COVER PROFILE

| | |
|--------------------------|--------------------------|
| ÜRÜN KODU / PRODUCT CODE | 2008 |
| AĞIRLIK / WEIGHT | 1,060 KG/M 2,337 LB/M |



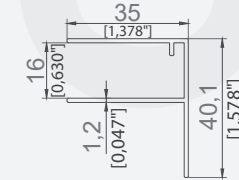
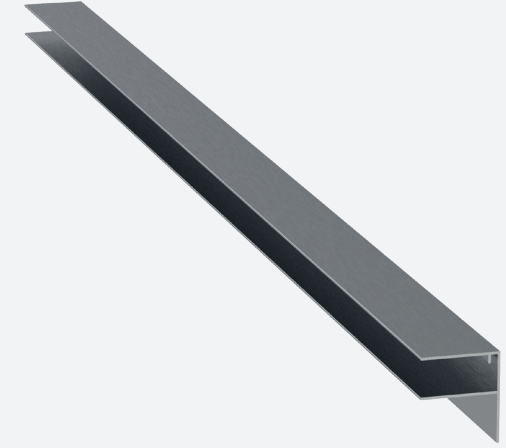
123x130 DİKME GÖVDE
123X130 PILLAR MAIN

| | |
|--------------------------|-------------------------|
| ÜRÜN KODU / PRODUCT CODE | 2009 |
| AĞIRLIK / WEIGHT | 3,057 KG/M 6,74 LB/M |



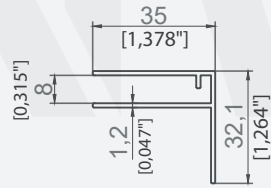
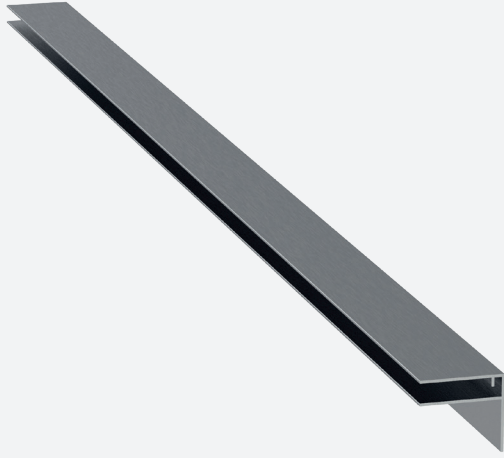
17x130 DİKME KAPAK PROFİLİ
17X130 PILLAR COVER PROFILE

| | |
|--------------------------|--------------------------|
| ÜRÜN KODU / PRODUCT CODE | 2010 |
| AĞIRLIK / WEIGHT | 1,025 KG/M 2,259 LB/M |



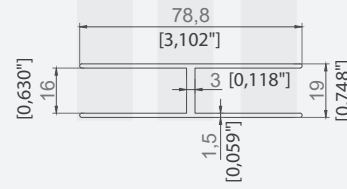
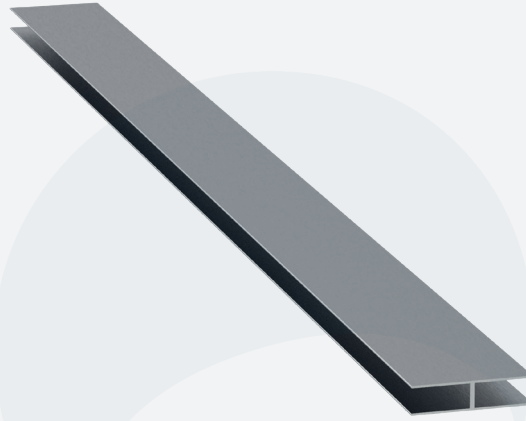
35X40,1 F PROFİLİ
35X40,1 F PROFILE

| | |
|--------------------------|---------------------------|
| ÜRÜN KODU / PRODUCT CODE | 2643 |
| AĞIRLIK / WEIGHT | 0,365 KG/M 0,8047 LB/M |



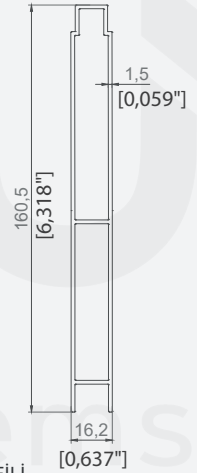
35X32,1 F PROFİLİ
35X32,1 F PROFILE

| | |
|--------------------------|--------------------------|
| ÜRÜN KODU / PRODUCT CODE | 2542 |
| AĞIRLIK / WEIGHT | 0,190 KG/M 0,419 LB/M |



78,8X19 H PROFİLİ
78,8X19 H PROFILE

| | |
|--------------------------|--------------------------|
| ÜRÜN KODU / PRODUCT CODE | 2642 |
| AĞIRLIK / WEIGHT | 0,770 KG/M 1,697 LB/M |



16,2X160 PANEL PROFİLİ
16,2X160 PANEL PROFILE

| | |
|--------------------------|--------------------------|
| ÜRÜN KODU / PRODUCT CODE | 2546 |
| AĞIRLIK / WEIGHT | 1,465 KG/M 3,230 LB/M |

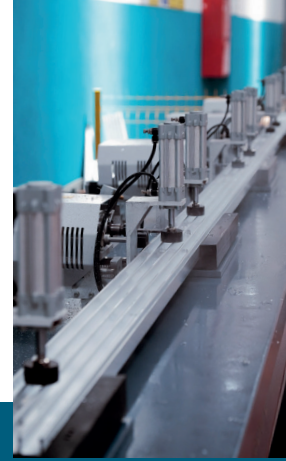
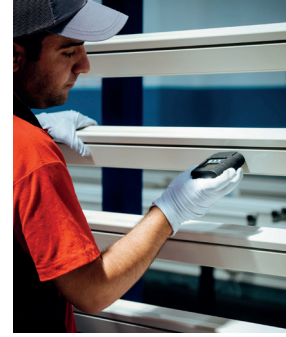
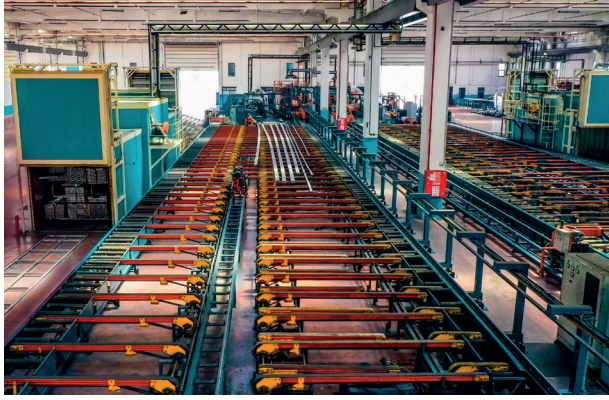


KIŞ BAĞÇESİ
AKSESUARLARI
3.SERİ

WINTER GARDEN
ACCESSORIES
3.SERIES

| | | | | |
|---|---|--|--|---|
|  <p>KAPAKLI AYAK ÜST BAĞLANTI APARATI(2009,2010) COVERED FOOT TOP CONNECTION APPARATUS(2009,2010)</p> <p>KOD / CODE ADET / PIECE</p> <p>KIS-02</p> |  <p>KAPAKLI AYAK ALT BAĞLANTI APARATI(2009,2010) COVERED FOOT BOTTOM CONNECTION APPARATUS(2009,2010)</p> <p>KOD / CODE ADET / PIECE</p> <p>KIS-03</p> |  <p>ARKA ASKI KAPAĞI(2004) REAR HANGER COVER(2004)</p> <p>KOD / CODE ADET / PIECE</p> <p>KIS-04</p> |  <p>OVAL OLUK KAPAĞI(2012) OVAL GUTTER COVER(2012)</p> <p>KOD / CODE ADET / PIECE</p> <p>KIS-05</p> |  <p>OVAL VE DİREK BİRLEŞTİRME APARATI(2012) OVAL AND PILLAR CONNECTION APPARATUS (2012)</p> <p>KOD / CODE ADET / PIECE</p> <p>KIS-06</p> |
|  <p>BASKI CONTASI PRESSURE GASKET</p> <p>KOD / CODE ADET / PIECE</p> <p>KIS-09 174MT/15KG</p> |  <p>ARKA BASKI CONTASI BACK PRESSURE GASKET</p> <p>KOD / CODE ADET / PIECE</p> <p>KIS-10 41MT/15KG</p> |  <p>75LİK FİLTRE / UZUN 75 FILTER / TALL</p> <p>KOD / CODE ADET / PIECE</p> <p>KIS-08Y</p> |  <p>75LİK FİLTRE / KISA 75 FILTER / SHORT</p> <p>KOD / CODE ADET / PIECE</p> <p>KIS-08</p> |  <p>24V LED 24V LED</p> <p>KOD / CODE ADET / PIECE</p> <p>KIS-22 100</p> |
|  <p>KIŞ BAĞÇESİ KONTROL ÜNİTESİ WINTER GARDEN CONTROL UNIT</p> <p>KOD / CODE ADET / PIECE</p> <p>KIS-35</p> |  <p>2X0.75 NYAF KABLO 2X0.75 NYAF CABLE</p> <p>KOD / CODE ADET / PIECE</p> <p>PRG-116 100 MT</p> | | | |

Aluminum Profile Systems



Biz kimiz ?

ÜSTÜN KALİTELİ ALÜMİNYUM PROFİL ÜRETİMİNİ HER GEÇEN GÜN ARTAN STANDARTLARLA DEVAM ETTİREN KENAN METAL A.Ş. ÜLKEMİZİN ÖNDE GELEN ALÜMİNYUM FABRİKALARINDAN BİRİDİR. MUTLAK MÜŞTERİ VE ÇALIŞAN MEMNUNİYETİ PRENSİBİYLE ÜRETİM YAPAN KENAN METAL A.Ş., TENTE PERGOLA, İNŞAAT VE ÖZEL PROFİLLER GİBİ FARKLI SEKTÖRLERİN MEVCUT VE GELECEKTEKİ BEKLENTİLERİNİ KARŞILAYAN, ÇEVREYLE DOST ÜRETİM SİSTEMLERİNİ BENİMSEYEN, KÜRESEL ETKİLEŞİMLERİ YAKINDAN TAKİP EDEREK SÜREKLİ YENİLENEN, ÇAĞDAŞ BİR VİZYONLA GELİŞİYOR. ÜRÜN-KALİTE ÇİTASININ SÜREKLİ YÜKSEKİLMESİ, ÜRÜN YELPAZESİNİN GELİŞTİRİLMESİ, YENİ ÜRÜNLERİN TASARIMI, KULLANIM ALANLARININ ARTTIRILMASI İÇİN SÜREKLİ OLARAK ÇALIŞAN AR-GE BÖLÜMÜYLE GÖZ DOLDURAN KENAN METAL A.Ş., KALİTESİ GÜVENİLİRLİĞİ, KULLANDIĞI TEKNOLOJİ VE ÖZEL ÇÖZÜMLER ÜRETME GÜCÜYLE PAZAR PAYINI SÜREKLİ GENİŞLETİYOR.

KENAN METAL A.Ş., ALÜMİNYUM BAZLI ÜRÜNLERİN KALİTELERİNİ ARTTIRARAK VE KULLANIM ALANLARINI YAYGINLAŞTIRARAK DOĞAL VE ESTETİK MEKANLARIN YARATILMASINA DA ÖNCÜLÜK EDİYOR. HER YAPI İÇİN KENDİNE ÖZGÜ ÜSTÜN NİTELİKLİ VE İLERİ TEKNOLOJİ GEREKTİREN ÇAĞDAŞ ÇÖZÜMLER SUNAN KENAN METAL A.Ş., ESNEK YAKLAŞIMLARI ÜSTÜN HİZMET KALİTESİ VE FİYAT-KALİTE DENGESİYLE KÜRESEL PAZARDA SÖZ SAHİBİ BİR KURUM OLMA YOLUNDA EMİN ADIMLARLA İLERLİYOR.

WHO ARE WE?

KENAN METAL IS ONE OF THE LEADING ALUMINUM FACTORIES OF OUR COUNTRY WHICH CONTINUES TO PRODUCE HIGH QUALITY ALUMINUM PROFILES WITH INCREASING STANDARDS EACH PASSING DAY. KENAN METAL WHICH MAKES PRODUCTION WITH ABSOLUTE CUSTOMER AND EMPLOYEE SATISFACTION PRINCIPLE, DEVELOPS WITH A MEDERN VISION THAT MEETS CURRENT AND FUTURE EXPECTATIONS OF DIFFERENT SECTORS SUCH AS AWNING PERGOLA, CONSTRUCTION AND SPECIAL PROFILES, ADOPTS ENVIRONMENTALLY FRIENDLY PRODUCTION SYSTEMS, RENEWS ITSELF CONSTANTLY BY FOLLOWING GLOBAL INTERACTIONS CLOSELY.

KENAN METAL WHICH MAKES A STRONG IMPRESSION WITH ITS R&D DEPARTMENT WORKING CON STANTLY FOR RAISING PRODUCT-QUALITY LEVEL, IMPROVING PRODUCT RANGE, DESIGNING NEW PRODUCTS, INCREASING USAGE AREAS, EXPANDS ITS MARKET SHARE CONSTANTLY WITH ITS QUALITY, CREDIBILITY TECHNOLOGY USED AND POWER TO PRODUCE SPECIAL SOLUTIONS KENAN METAL IS ALSO LEADING CREATION OF NATURAL AND AESTHETIC SPACES BY INCREASING QUALITY OF ALUMINUM-BASED PRODUCTS AND EXPANDING USAGE AREAS. KENAN METAL WHICH OFFERS ITS UNIQUE, SUPERIOR AND MODERN SOLUTIONS REQUIRING ADVANCED TECHNOLOGY FOR EVERY STRUCTURE, IS MOVING CONFIDENTLY ON ITS WAY TO BECAME A PROMISING COMPANY IN GLOBAL MARKET WITH ITS FLEXIBLE APPROACHES, SUPERIOR SERVICE QUALITY AND PRICE-QUALITY BALANCE.



KENAN METAL®





KENANMETAL.COM | INFO@KENANMETAL.COM | +90 212 485 60 35

GENEL MERKEZ : İOSB MH. ATATÜRK BLV. MAHMUT TORUN İŞ MERKEZİ NO: 54 KAT:1 34490 İKİTELLİ OSB / BAŞAKŞEHİR / İSTANBUL
FABRİKA : VELİMEŞE MAHALLESİ, KANDİL CADDESİ, 329 SOKAK, DIŞ KAPI NO:7 ERGENE / TEKİRDAĞ

