


KENAN METAL


ARTMINYUM®

LYRA

TAVAN PERDESİ SİSTEMİ

Lyra
Ceiling Zip Screen System



LYRA TAVAN PERDESİ SİSTEMİ

Lyra Ceiling Zip-Screen System



LYRA TAVAN PERDESİ SİSTEMLERİ, DIŞ MEKANLARDA GÜNEŞ IŞIĞINDAN, SICAKLIKTAN VE HAVA KOŞULLARINDAN KORUNMAK AMACIYLA KULLANILAN MODERN BİR PERDE KAPLAMA ÇÖZÜMÜDÜR.

ALÜMİNYUMDAN YAPILMIŞ BİR KASA, PERDEYİ SAKLAMAK VE KORUMAK İÇİN KULLANILIR. BU KASA GENELLİKLE ESTETİK VE DAYANIKLILIK AÇISINDAN ÖNEMLİDİR.

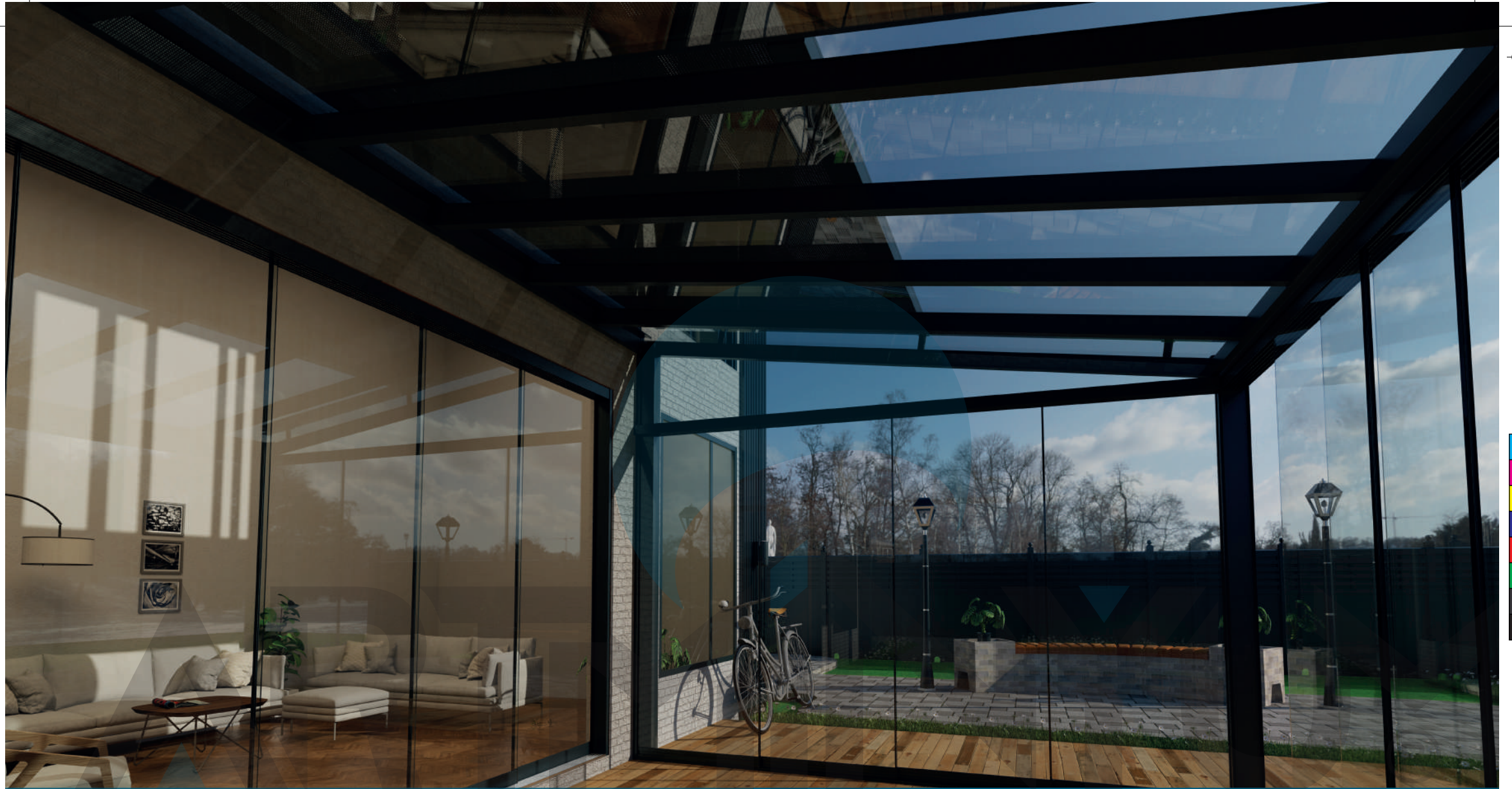
ALÜMİNYUM YAN KANALLAR, PERDENİN YANLARDA DÜZGÜN BİR ŞEKİLDE HAREKET ETMESİNİ SAÇLAR VE RÜZGARIN ALTINA SIZMASINI ÖNLER.

LYRA CEILING CURTAIN SYSTEMS ARE A MODERN WINDOW COVERING SOLUTION USED TO PROTECT OUTDOOR SPACES FROM SUNLIGHT, HEAT, AND WEATHER CONDITIONS.

A CASING MADE OF ALUMINUM IS USED TO STORE AND PROTECT THE BLIND. THIS CASING IS GENERALLY IMPORTANT FOR AESTHETICS AND DURABILITY.

ALUMINUM SIDE CHANNELS ENSURE THE SMOOTH MOVEMENT OF THE BLIND ON THE SIDES AND PREVENT WIND FROM SEEPING UNDERNEATH.





RAL RENK STANDARDINA GÖRE SEÇTİĞİNİZ TÜM RENKLER UYGULANABİLİR.

COLOURING OF YOUR CHOICE, ACCORDING TO THE RAL COLOUR STANDARD.



YAĞMUR VE RÜZGAR GİBİ HAVA ŞARTLARINA SON DERECE DAYANIKLIDIR.

IT IS EXTREMELY RESISTANT TO WEATHER CONDITIONS SUCH AS RAIN AND WIND.



MATERYAL // 6063 T5 ALÜMİNYUM, PASLANMAZ ÇELİK VE DERLİN.

MATERIALS // 6063 T5 ALUMINUM, STAINLESS STEEL AND DERLIN.

LYRA TAVAN PERDESİ SİSTEMİNDE, KUMAŞLAR ÖZEL OLARAK TASARLANMIŞ BİR ZİP KANALI BOYUNCA HAREKET EDER. BU ZİP KANALI, PERDENİN YANLARINDA BULUNUR VE KUMAŞIN SIKICA YERİNDE KALMASINI SAĞLAR.

LYRA TAVAN PERDESİ SİSTEMİ, GÜNEŞ IŞINLARINI ENGELLEYEREK İÇ MEKANLARA DAHA SERİN VE GÖLGELİ BİR ORTAM SAĞLAR. BU, SICAK HAVALARDA KONFORU ARTIRIR VE MOBİLYALARIN GÜNEŞİN ZARARLI ETKİLERİNDEN KORUNMASINA YARDIMCI OLUR.

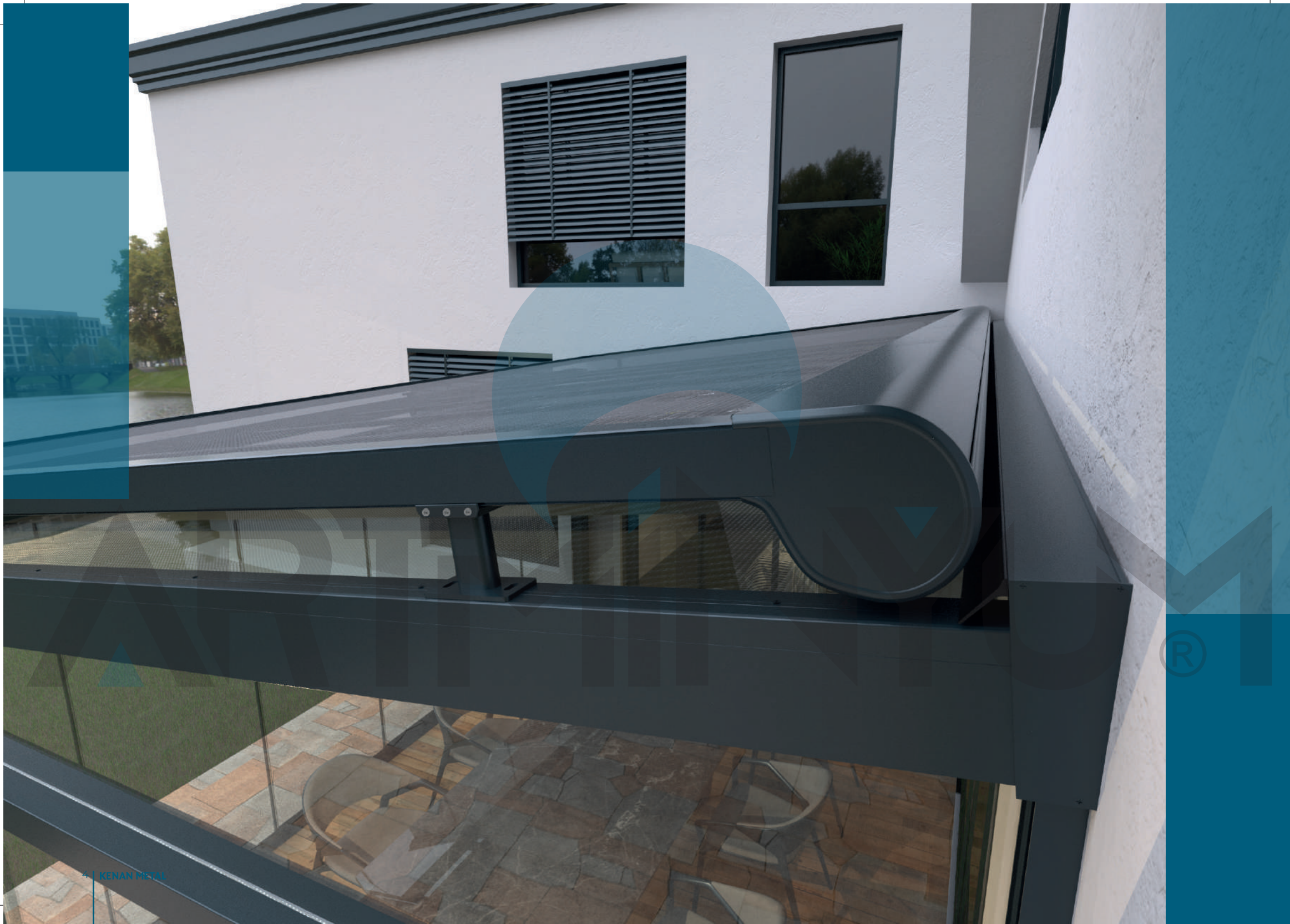
LYRA TAVAN PERDESİ SİSTEMİ, MODERN VE ŞİK BİR GÖRÜNÜME SAHIPTİR. GENELLİKLE DIŞ MEKANLARDA KULLANILDIKLARINDA, YAPIYA ZARIF BİR DOKUNUŞ KATARAK MEKANIN ESTETİĞİNİ ARTIRIRLAR.

IN THE LYRA CEILING CURTAIN SYSTEM, FABRICS MOVE ALONG A SPECIALLY DESIGNED ZIP CHANNEL. THIS ZIP CHANNEL IS LOCATED ON THE SIDES OF THE BLIND AND ENSURES THAT THE FABRIC STAYS IN PLACE SECURELY.

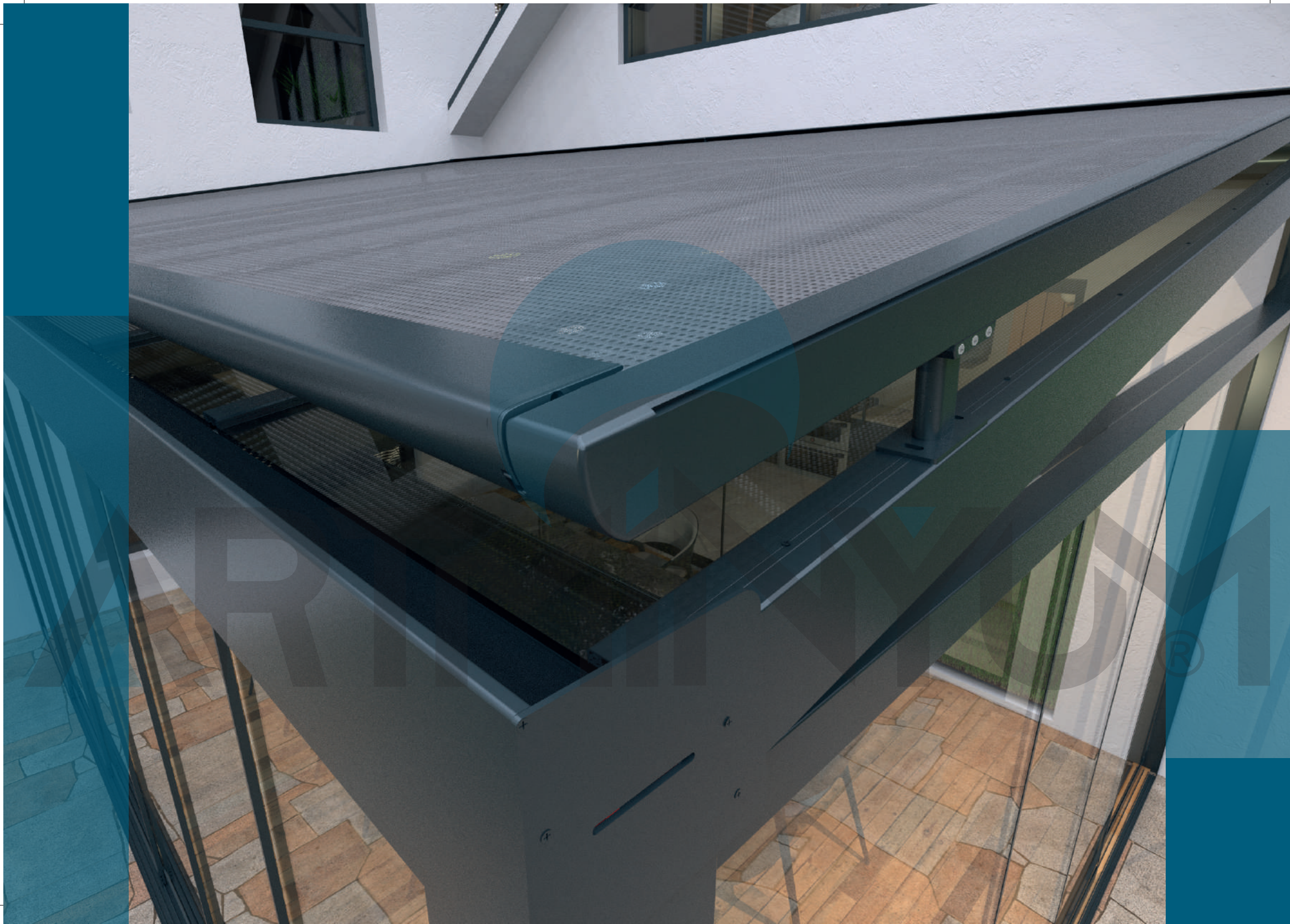
THE LYRA CEILING CURTAIN SYSTEM BLOCKS SUNLIGHT, PROVIDING A COOLER AND SHADED ENVIRONMENT INDOORS. THIS INCREASES COMFORT DURING HOT WEATHER AND HELPS PROTECT FURNITURE FROM THE HARMFUL EFFECTS OF THE SUN.

THE LYRA CEILING CURTAIN SYSTEM HAS A MODERN AND STYLISH APPEARANCE. WHEN USED OUTDOORS, THEY ADD AN ELEGANT TOUCH TO THE STRUCTURE, ENHANCING THE AESTHETICS OF THE SPACE.

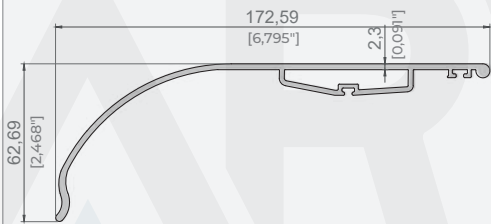




4 | KENAN METAL

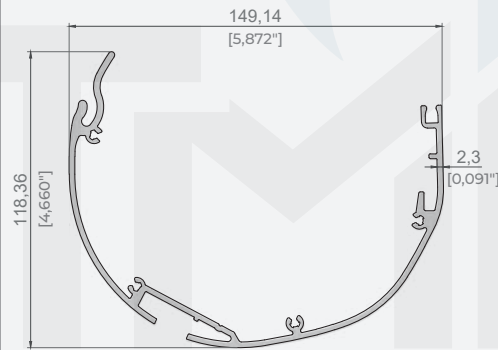
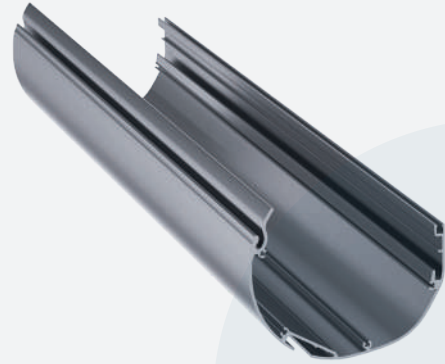


SİSTEM PROFİLLERİ / SYSTEM PROFILES



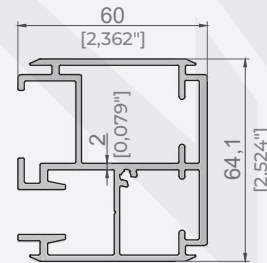
MOTOR KUTUSU KAPAÇI
MOTOR BOX COVER

Ürün Kodu / Product Code	4100
Ağırlık / Weight	1,740 kg/m 3,836 lb/m



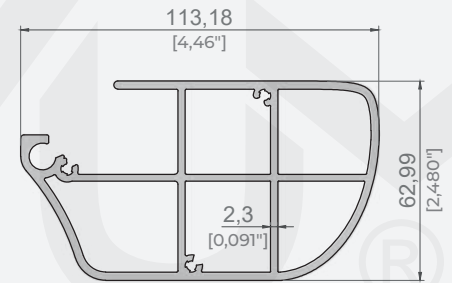
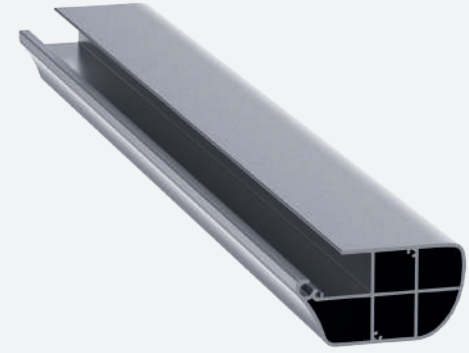
MOTOR KUTUSU
MOTOR BOX

Ürün Kodu / Product Code	4099
Ağırlık / Weight	2,664 kg/m 5,873 lb/m



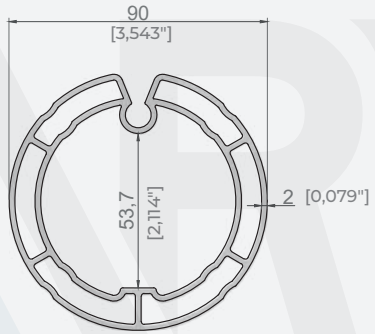
RAY PROFİLİ
RAIL PROFILE

Ürün Kodu / Product Code	4102
Ağırlık / Weight	2,073 kg/m 4,57 lb/m



ÇEKİCİ PROFİLİ
PULL HANDLE PROFILE

Ürün Kodu / Product Code	4101
Ağırlık / Weight	3,325 kg/m 7,330 lb/m



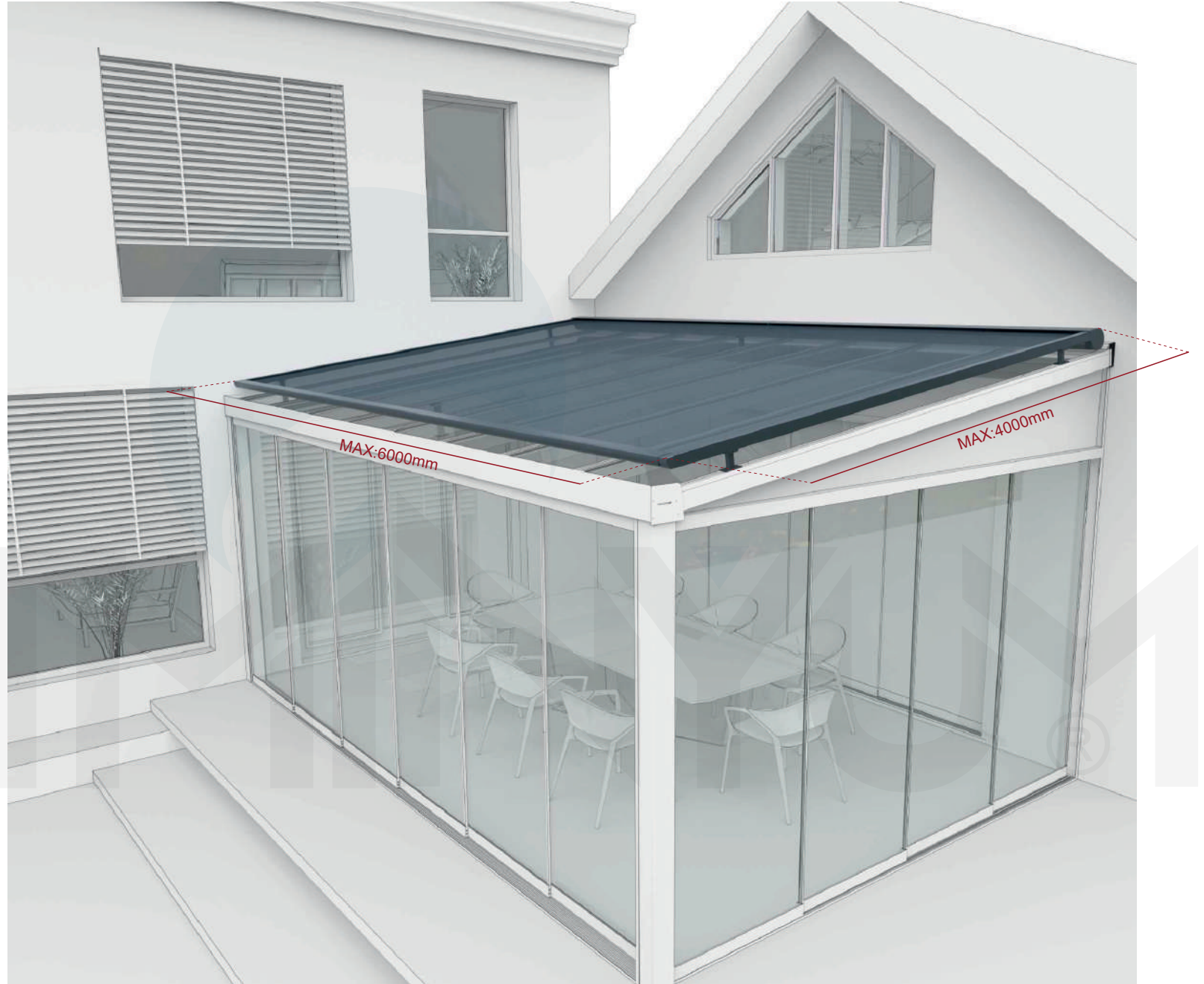
MOTOR BORUSU PROFİLİ
MOTOR TUBE PROFILE

Ürün Kodu / Product Code

4167

Ağırlık / Weight

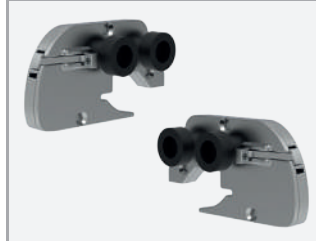
3,049 kg/m
6,722 lb/m



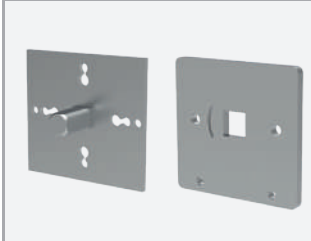
SİSTEM AKSESUARLARI / SYSTEM ACCESSORIES

LYRA TAVAN PERDESİ
AKSESUAR SETİLYRA CEILING ZIP
SCREEN ACCESSORY SETMOTOR KAPAK TAKIMI
MOTOR COVER SETKod / Code
Adet / Piece

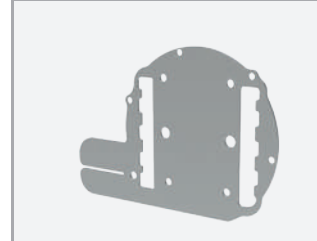
PTP-1

ÇEKİCİ PROFİL KAPAK TAKIMI
PULL HANDLE PROFILE COVER SETKod / Code
Adet / Piece

PTP-2

MOTOR BAĞLANTI APARATI
MOTOR CONNECTION APPARATUSKod / Code
Adet / Piece

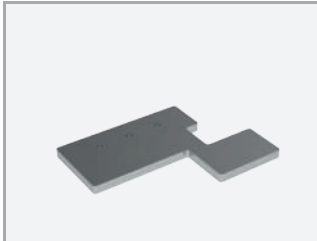
PTP-3

MOTOR APARATI
MOTOR APPARATUSKod / Code
Adet / Piece

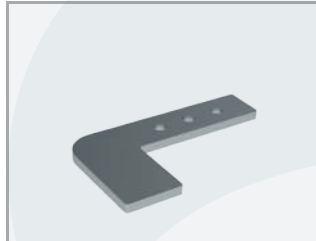
PTP-4

SKF 6301 RULMAN
SKF 6301 BEARINGKod / Code
Adet / Piece

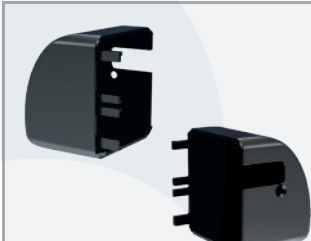
PTP-5

PERDE SABİTLEME APARATI
CURTAIN HOLDBACK APPARATUSKod / Code
Adet / Piece

PTP-6

ALT ÇEKİCİ PERDE SABİTLEME APARATI
LOWER CURTAIN HOLDBACK APPARATUSKod / Code
Adet / Piece

PTP-7

RAY KAPAK TAKIMI
RAIL COVER SETKod / Code
Adet / Piece

PTP-8

PİSTON İP AKTARIM PLASTİĞİ
PISTON CORD TRANSFER PLASTICKod / Code
Adet / Piece

PTP-9

PİSTON SABİTLEME APARATI
PISTON FIXING APPARATUSKod / Code
Adet / Piece

PTP-10

BORU BAŞI VE MOTOR SWITCH PLASTİĞİ
PIPE HEAD AND MOTOR SWITCH PLASTICKod / Code
Adet / Piece

PTP-11

RULMAN YATAĞI PLASTİĞİ
BEARING HOUSING PLASTICKod / Code
Adet / Piece

PTP-12



LYRA TAVAN PERDESİ
AKSESUARLARI

LYRA CEILING ZIP
SCREEN ACCESSORIES



AYAK(RAY SABİTLEME APARATI)
FOOT (RAY FIXING APPARATUS)

Kod / Code
Adet / Piece

PTP-13



İKİLİ AYAK(RAY SABİTLEME APARATI)
DUAL FOOT (RAY FIXING APPARATUS)

Kod / Code
Adet / Piece

PTP-14



FERMUAR PLASTİĞİ
ZIPPER PLASTIC

Kod / Code
Adet / Piece

PTP-15



ZİP PERDE FERMUAR
ZIP CURTAIN ZIPPER

Kod / Code
Adet / Piece

ZIP-02



6MM PVC ÇUBUK
6MM PVC ROD

Kod / Code
Adet / Piece

ZIP-03



TAVAN PERDESİ İP
CEILING CURTAIN ROPE

Kod / Code
Adet / Piece

TP-11

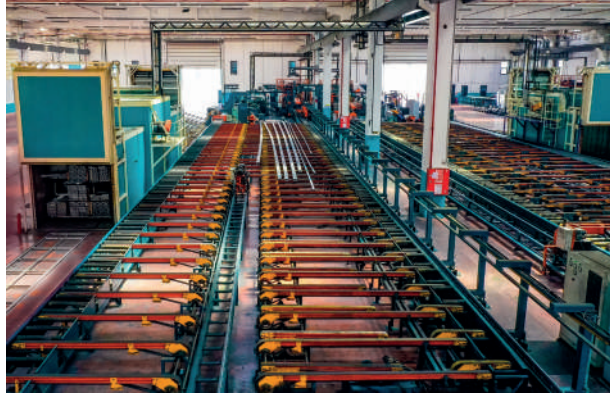


PISTON
PISTON

Kod / Code
Adet / Piece

PTP-16

ARTMİNYUM®



Biz Kimiz ?

Üstün kaliteli alüminyum profil üretimini her geçen gün artan standartlarla devam ettiren Kenan Metal A.Ş. ülkemizin önde gelen alüminyum fabrikalarından biridir. Mutlak müşteri ve çalışan memnuniyeti prensibiyle üretim yapan Kenan Metal A.Ş., tente pergola, inşaat ve özel profiller gibi farklı sektörlerin mevcut ve gelecekteki beklentilerini karşılayan, çevreyle dost üretim sistemlerini benimseyen, küresel etkileşimleri yakından takip ederek sürekli yenilenen, çağdaş bir vizyonla gelişiyor. Ürün-kalite çitasının sürekli yükselmesi , ürün yelpazesinin geliştirilmesi, yeni ürünlerin tasarımı, kullanım alanlarının artırılması için sürekli olarak çalışan Ar-Ge bölümüyle göz dolduran Kenan Metal A.Ş., kalitesi güvenilirliği, kullandığı teknoloji ve özel çözümler üretme gücüyle pazar payını sürekli genişletiyor.

Kenan Metal A.Ş., alüminyum bazlı ürünlerin kalitelerini arttırarak ve kullanım alanlarını yaygınlaştırarak doğal ve estetik mekanların yaratılmasına da öncülük ediyor. Her yapı için kendine özgü üstün nitelikli ve ileri teknoloji gerektiren çağdaş çözümler sunan Kenan Metal A.Ş., esnek yaklaşımları üstün hizmet kalitesi ve fiyat-kalite dengesiyle küresel pazarda söz sahibi bir kurum olma yolunda emin adımlarla ilerliyor.

Who Are We?

Kenan Metal is one of the leading aluminum factories of our country which continues to produce high quality aluminum profiles with increasing standards each passing day. Kenan Metal which makes production with absolute customer and employee satisfaction principle, develops with a modern vision that meets current and future expectations of different sectors such as awning pergola, construction and special profiles, adopts environmentally friendly production systems, renews itself constantly by following global interactions closely.

Kenan Metal which makes a strong impression with its R&D department working constantly for raising product-quality level, improving product range, designing new products, increasing usage areas, expands its market share constantly with its quality, credibility technology used and power to produce special solutions

Kenan Metal is also leading creation of natural and aesthetic spaces by increasing quality of aluminum-based products and expanding usage areas. Kenan Metal which offers its unique, superior and modern solutions requiring advanced technology for every structure, is moving confidently on its way to become a promising company in global market with its flexible approaches, superior service quality and price-quality balance.



KENAN METAL®





kenanmetal.com | info@kenanmetal.com | +90 212 485 60 35

Genel Merkez : İosb Mh. Atatürk Blv. Mahmut Torun İş Merkezi No: 54 Kat: 134490 İkitelli Osb / Başakşehir / İstanbul
Fabrika : Velimeşe Mahallesi, Kandil Caddesi, 329 Sokak, Dış Kapı No:7 Ergene / Tekirdağ



TR / ENG 2023v1

